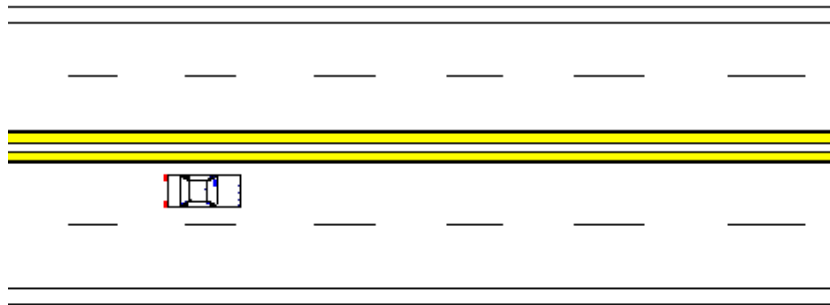




The Los Banos Police Department has received numerous calls regarding traffic in the downtown area. The primary concern is the improper u-turns, or parking in the spaces on the opposite side of the roadway.

**DOUBLE YELLOW LINE  
Do Not Cross**

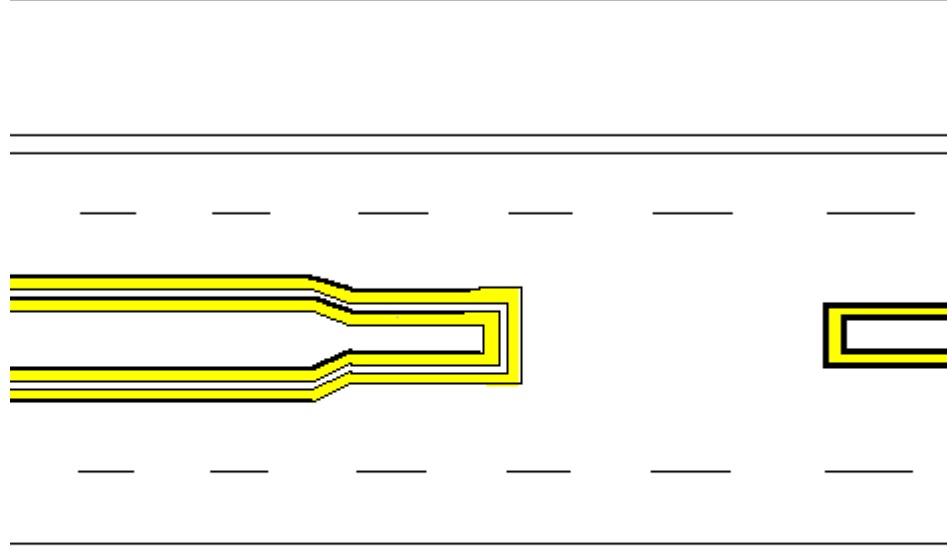


**NO PASSING**

**BUT YOU MAY CROSS TO TURN LEFT (INTO A DRIVEWAY ETC)**

The downtown area is highly traveled by motorists and is not safe to make these types of turns. This is why the roadway of Main St. is marked with double yellow roadway markers. The solid double yellow lines in the center of the roadway indicates that vehicles cannot turn across this section of roadway unless at an intersection or private driveway. A U-turn in a business district, or across a double double yellow line that is at least 24", is also unlawful.

**TWO SETS OF SOLID DOUBLE YELLOW LINES**



Through increased vigilance we plan to enforce the violations as they are observed.

Remember to always have your younger children safely secured in a child safety seat, and buckle your seat belt as well!